

360 FLY



The Galeon 360 FLY joins the acclaimed third-generation flybridge lineup to bring a series of innovations to this highly competitive segment. Expect great space management on all three decks, competitive performance and a high level of finish of the customizable interior. The cockpit area is fitted with an L-shaped sofa with a drop-down backrest and wide steps that lead to the flybridge. Move the glass doors out of the way,

flip the saloon seat to face the aft and create an even larger area for activities. Up top, a double driver's seat and a leisure area await the guests, while the more adventurous ones might opt for the bow sundecks or the innovative front seat for a thrilling ride.

Inside, a large comfortable seating area faces the well-equipped galley, with the helm station moved forward. The driver is sure to appreciate the starboard sliding doors that allow for easy access to the bow during mooring. Find an incredible three cabin layout down below, complete with a shower fitted bathroom. Bunk beds in the guest cabin boost the number of berths down below to six, perfect for large families. All cabins offer standing height and extra storage that comes handy during longer cruises.

Flybridge line

A recent premiere, the 360 FLY brings a breath of fresh air to the compact flybridge category. With a clever interior layout, it offers a surprisingly roomy living arrangement on board with three cabins down below. The striking exterior is a staple of the Galeon design.





360 FLY

The 360 FLY offers a fresh take on the compact flybridge segment. Notice the innovative starboard side doors for easy access to the bow.



The 360 FLY can be custom painted for even more striking visuals



The top deck offers perfect visibility for extreme cruising



360 FLY - Walnut High Gloss

A bright and welcoming saloon is located on the main deck



Find a galley and a dinette in the saloon —



The forward cabin holds a double bed and extra storage —



Guest bedroom comes with a large, double bed —



Bathroom comes fitted with a head and shower —

Lati Grey

360 FLY



— Find extra storage space all around the main cabin



— The table can be propped up for extra dining space



— The main cabin has an abundance of windows and skylights



— Bunk beds in the guest cabin down below

Eucalyptus
High Gloss

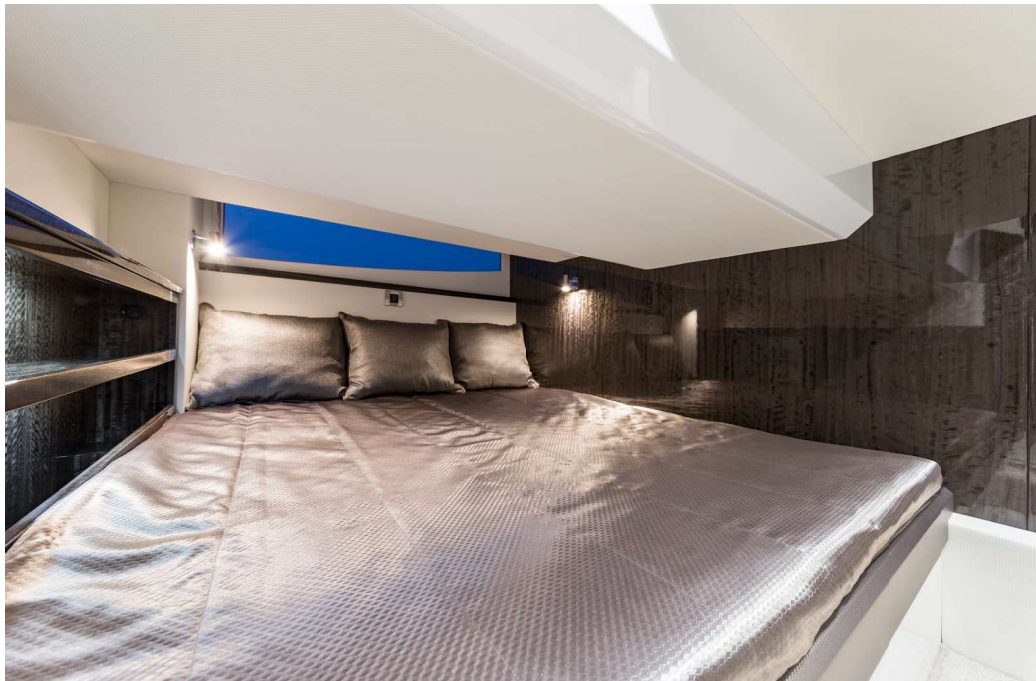
360 FLY



A custom high gloss design shows off the yachts features



Great visibility and control from the helm



A large bed in the guest cabin down below



Quality finish and a separate shower will please the guests



— A double seat at the helm station above



— Plenty of space for activities and leisure



— Prop up the bow seat for a thrilling ride

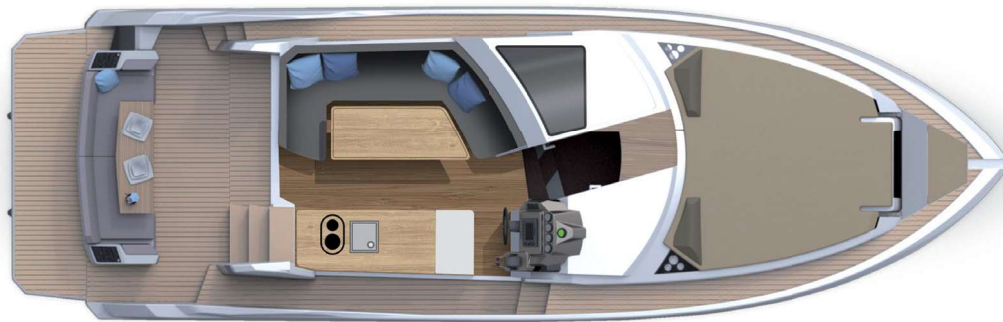
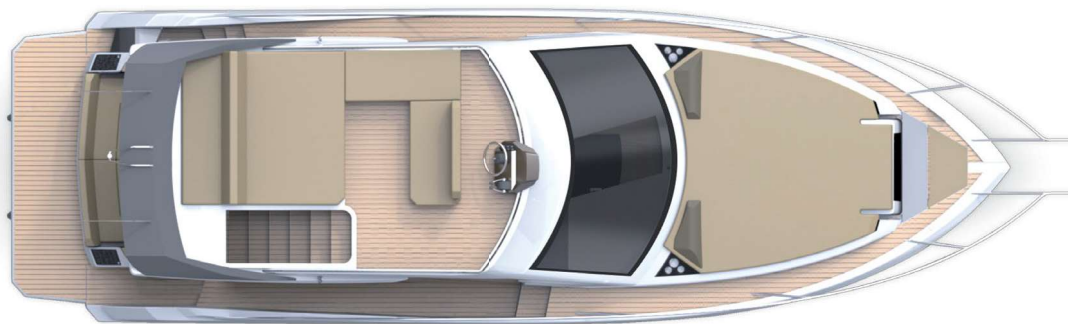


— The cockpit offers easy access to the saloon and flybridge areas

360 FLY

A STEP ABOVE

LAYOUTS



TECHNICAL SPECIFICATION

Length of the hull	[m]	9.99
Length overall	[m]	11,37 / 11,75*
Beam of the hull	[m]	3.43
Beam overall	[m]	3.48
Draft max ₁	[m]	0.79
Bridge clearance ₂	[m]	4.20
Height to transport	[m]	4.17
Fuel tank capacity	[dm ³]	2 x 400
Water tank capacity	[dm ³]	350
Grey water tank	[dm ³]	300
Black water tank	[dm ³]	150
Mass of Light Craft Condition ₃	[kg]	8040
Maximum Load	[kg]	2500
Min. engine (-s) power	[kW/HP]	2x147/200
Max. engine (-s) power	[kW/HP]	2x221/300
Crew limit		10
Category		B

₁ - without propellers ₂ - Max. height from water line at draft min. ₃ - minimum mass with base engines

* - with extended stern platform

**3RD GALEON
GENERATION**

R²DESIGN
robertocurto@design.com

**VOLVO
PENTA**

MERCURY

Cabin Cruiser
Motorboat of the Show 2017
VMS RAR



**A STEP ABOVE
COMPETITION**

360 FLY / 370 HTC

