



SDX 290

Designed for all-day comfort and precision handling, the yacht-certified SDX® 290 is the ultimate in entertaining. It delivers a truly exceptional boating experience, featuring quietly powerful performance and elegant, comfortable seating. From bow to stern, from a standard wet bar to an optional refrigerator and electric grill, Sea Ray® designers set their sights on every detail. Available with sterndrive or outboard propulsion.

SDX® 290

**MERCURISER® 6.2L
MPI ET BRAVO THREE®**
WITH DTS (300HP / 224 KW)
Options up to 380hp / 283 kW

85 GALLONS
322 LITERS

29'2" / 8.89 M
OVERALL LENGTH WITH
INTEGRAL SWIM PLATFORM

9'0" / 2.74 M
BEAM

20 GALLONS
76 LITERS

YACHT CERTIFIED

SDX® 290 OB



**TWIN MERCURY® 200
FOURSTROKE OUTBOARDS**
WITH OPTIONAL SEASTAR SOLUTIONS® OPTIMUS 360
JOYSTICK SYSTEM (T-200HP / 149 KW)
Options up to 250hp / 186 kW



130 GALLONS
492 LITERS



31'2" / 9.50 M
OVERALL LENGTH WITH
OUTBOARD ENGINE



9'0" / 2.74 M
BEAM

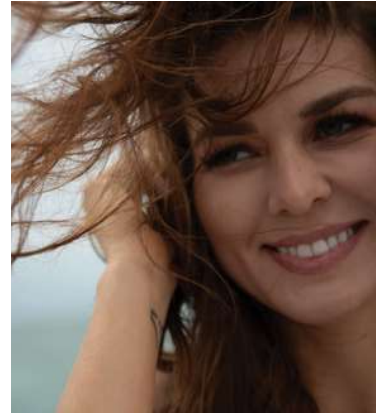


20 GALLONS
76 LITERS

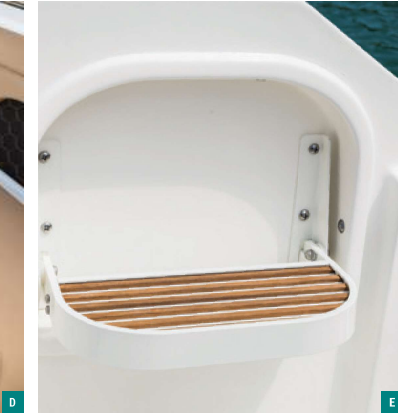


YACHT CERTIFIED

Note: Options and features are subject to change. Confirm availability with an authorized Sea Ray dealer.



Note: Options and features are subject to change. Confirm availability with an authorized Sea Ray dealer.



FEATURES SHOWN

- A** Deep seating with standard cockpit table (shown stowed) and dedicated storage (shown with optional 12 V refrigerator)
- B** Bow lounge seating (shown with optional bow filler cushions); features a bow locker with concealed four-step boarding ladder and anchor storage
- C** Optional Simrad® G09 or G012 Digital Dash™ touchscreen display and Fusion® Premier Audio System (shown with G012; G09 is standard on OB model)
- D** Spacious, comfortable bow social zone (shown with optional bow table)
- E** Standard flip-down boarding step makes easy transitions between dock and boat
- F** Rear sunpad overlooks integral swim platform with optional SeaDek® matting (shown with standard cockpit table)

ADDITIONAL FEATURES Abundance of available shade via an optional bimini top / Optional Sports Tower, available in white or black / Standard integrated full-beam swim platform and four-step ladder / Standard Active Trim

SDX® 290



39" / 99 CM
DRAFT (STERNDRIVE DOWN)

26" / 66 CM
DRAFT (STERNDRIVE UP)

6,595 LB / 2,991 KG
DRY WEIGHT

21°
DEADRISE

SDX® 290 OB



38" / 97 CM
DRAFT (OUTBOARD DOWN)

21" / 53 CM
DRAFT (OUTBOARD UP)

7,030 LB / 3,189 KG
DRY WEIGHT

21°
DEADRISE

Note: Options and features are subject to change. Confirm availability with an authorized Sea Ray dealer.