

780 CRYSTAL



The 780 CRYSTAL is more than just a flagship model – it is a showcase of engineering, design and technological prowess. The stunning exterior offers an abundance of space on all three decks.

The clever seating arrangement on the flybridge allows for the placement of an optional hot tub, comfortable sunbeds, second steering station and a wet bar for the guests to enjoy.

Flybridge line

A flagship model and a showcase of Galeon engineering, the 780 CRYSTAL offers superior handling and performance coupled with a stunning, highly customizable interior and a plethora of optional equipment.

The cockpit offers easy access to the bar on the main deck and to the bow leisure area, which is protected by an automatic bimini system. The main deck with leisure and entertainment areas is always bathed in sunlight thanks to the broad side windows, large sliding doors and an automatic glass panel roof. Below, all four guest quarters have private in-suite bathrooms for extra comfort and privacy. The exciting line of the CRYSTAL in no way compromises the amount of natural light available in any of the cabins.

The spacious owner's cabin is fitted with a double bed and offers both an ensuite bathroom and a walk-in wardrobe complete with a safe for valuables for the guest's convenience. The spacious forward VIP cabin holds a variety of closets and storage spaces while both guest cabins, which are located at the sides of the yacht, have twin berths for a total of eight on the lower deck.

The hull is designed with comfort in mind yet the performance of the powerful engines is stellar. The captain will surely make use of the integrated monitoring system, which keeps track of all the important data, while the crew will appreciate their quarters with two beds, a galley and a separate bathroom. The powerful, hydraulic stern platform comes standard and will handle any watercraft.





780 **CRYSTAL** - The flagship

The 780 gently cruises even in harsh conditions due to its flawless design and sheer size



Striking exterior lines of the 780



Gain access to the crew cabin from the bath platform



780 CRYSTAL - Walnut

The saloon comes in a variety of layouts - customize your own dream yacht



Entertainment area with a bar to serve refreshments



The large TV can be hidden away



The helm station and command centre

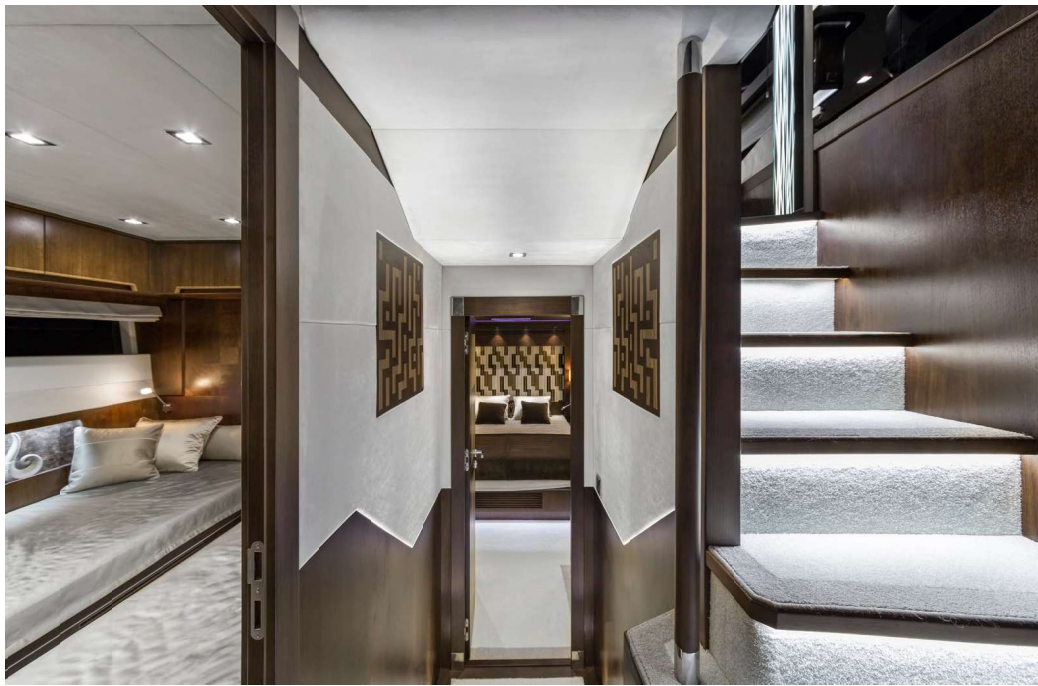


Kitchen and dining area

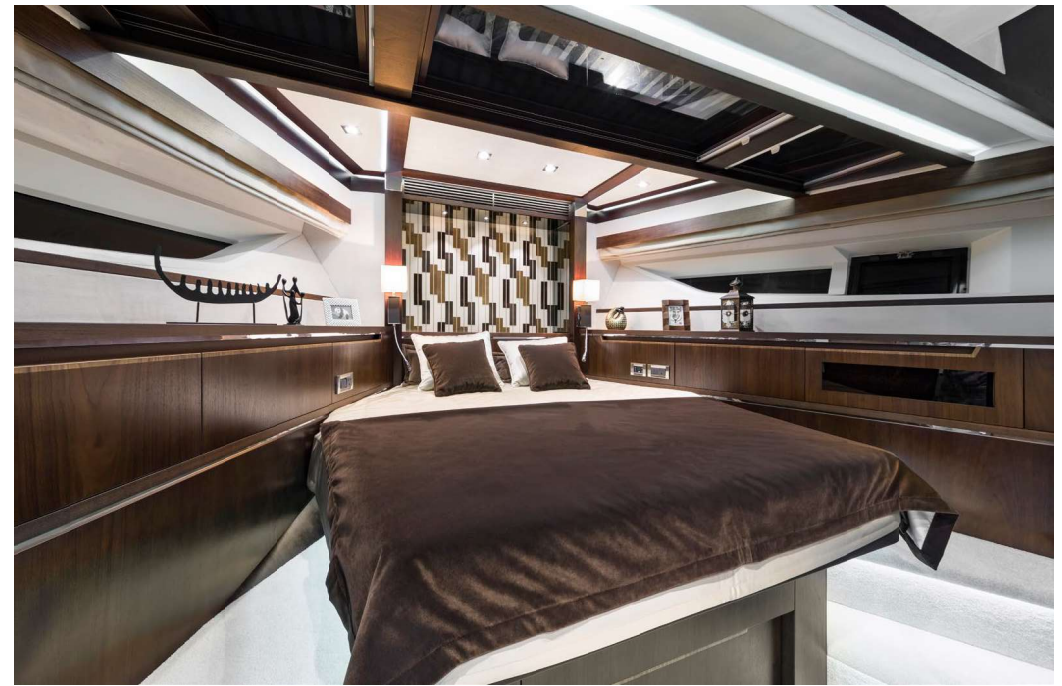


780 CRYSTAL - Master Cabin

With plenty of space the master cabin holds an en suite bathroom and a walk-in closet



Up to four cabins and three bathrooms down below



Forward VIP guest cabin



Twin, guest cabin



Master bathroom down below



— Bow rest and leisure area



— Cockpit seating with easy access to the top deck



— The flybridge can be fitted with a bar and a Jacuzzi



— The spacious flybridge will come in handy for entertaining guests

780 CRYSTAL

A CRYSTAL SHIP

LAYOUTS



TECHNICAL SPECIFICATION

Length of the hull	[m]	22.86
Length overall	[m]	24.50
Beam of the hull	[m]	5.79
Beam overall	[m]	5.80
Draft max ₁	[m]	1.30
Bridge clearance ₂	[m]	7.30
Height to transport	[m]	9.54
Fuel tank capacity	[dm ³]	2 x 2750
Water tank capacity	[dm ³]	1100+700
Grey water tank	[dm ³]	500
Black water tank	[dm ³]	500
Mass of Light Craft Condition ₃	[kg]	54540
Maximum Load	[kg]	9260
Min. engine (-s) power	[kW/HP]	2x1176/1600
Max. engine (-s) power	[kW/HP]	2x1412/1920
Crew limit		18
Category		B

₁ - without propellers ₂ - Max. height from water line at draft min. ₃ - minimum mass with base engines

3RD GALEON
GENERATION

CASTRO
YACHT DESIGN

MAN

mtu

YACHT DESIGN
FINALIST



780 CRYSTAL

