

390 HTC



Galeon 390 HTC offers exciting performance and flawless design as expected from a third-generation model. Based on the hull of the successful 380 FLY, the hardtop offers a distinguishable, sporty exterior matched by its quality interior. The sizable glass roof, 390 HTC's most prominent feature, flushes the main deck with natural light and opens with a touch of a button.

With the roof out of the way everyone on board can enjoy the breeze and sunshine as they cruise along. The transformable aft settee occupies the cockpit space, and can be quickly turned into a large sun lounger to fully utilize the retractable sunroof above.

Wide side decks lead to the bow leisure area complete with two mattresses best suited for sunbathing. Simply slide the cockpit doors to reveal a bright and welcoming interior of the main deck.

The saloon is surrounded by windows and holds a helm station, galley and dinette with extra storage space available. Several interior design lines, with a choice of fabrics and a long list of additional equipment will allow to create endless variations to suit all needs and purposes.

Below deck, two or three guest cabins are located along a separated head and shower facilities for extra privacy and comfort. A wide variety of engines completes the package that is sure to please both sport enthusiasts as well as fans of relaxed cruising.

Hardtop line

The hardtop variant of the 380 does away with the top deck in favor of a more dynamic profile and a handy sunroof over the helm station. The sporty, uncompromising design pairs well with the tight handling and great performance.





— Exciting design matched by flawless performance



— The roof over the cockpit is retractable



— Cockpit seating turned into a sundeck



390 HTC - Walnut High Gloss

The saloon is well lit due to the abundance of windows and a large sunroof above the helm



— The dinette is moved back



— A well equipped galley



— Up to three cabins down below

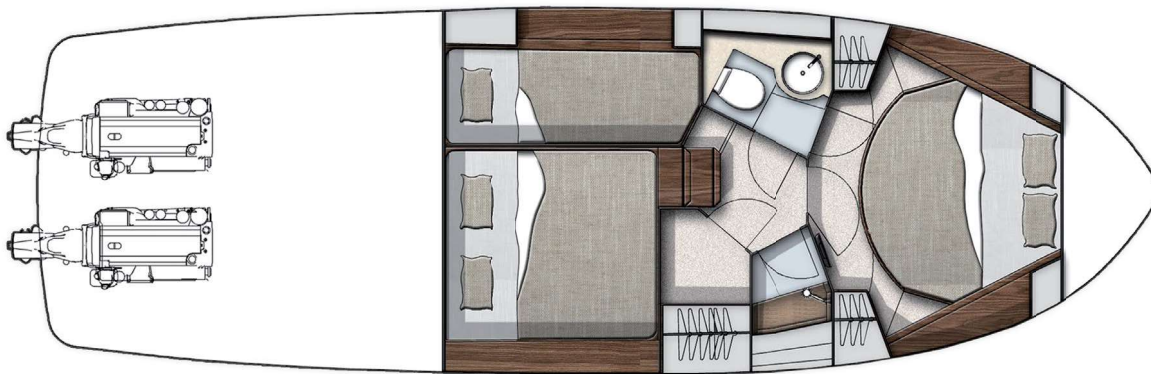


— The owner's quarters

390 HTC

FLAWLESS DESIGN

LAYOUTS



TECHNICAL SPECIFICATION

Length of the hull	[m]	11.70
Length overall	[m]	11.99
Beam of the hull	[m]	3.66
Beam overall	[m]	3.74
Draft max ₁	[m]	0.81
Bridge clearance ₂	[m]	4.50
Height to transport	[m]	4.00
Fuel tank capacity	[dm ³]	2 x 500
Water tank capacity	[dm ³]	500
Grey water tank	[dm ³]	210
Black water tank	[dm ³]	135
Mass of Light Craft Condition ₃	[kg]	9700
Maximum Load	[kg]	2580
Min. engine (-s) power	[kW/HP]	2x165/225
Max. engine (-s) power	[kW/HP]	2x272/370
Crew limit		10
Category		B

₁ - without propellers ₂ - Max. height from water line at draft min. ₃ - minimum mass with base engines

