

380 FLY



The 380 FLY shares similarities with the distinctive line of the third-generation Galeon yachts yet remains original and recognizable. The yacht's sporty silhouette quickly catches the eye with its hull-length windows, aggressive lines and ample flybridge. Outside, the cockpit welcomes you with a transformable, fold-out settee with adjustable lumbar support.

The generous side decks and practical handrails are great for crew while mooring and sailing rough seas. Follow them to the bow sundeck with conveniently placed cup holders and a regulated headrest for additional back support. Up top, the foldable radar arch and mast allow for an easier passage under bridges and other obstacles.

The glass doors in the cockpit slide to reveal a cozy salon suffused with natural light thanks to the drop-down windows and a slightly tilted windshield made from a single sheet of glass. The design team made sure the interior is as bright and welcoming as possible. On the main deck find a comfortable dinette, helm station and a galley that can be moved down below in the two-cabin version.

A plethora of interior design options with a choice of high-quality natural woods will allow you to fully customize the yacht to suit your needs. Down below, find up to three cabins with a separate shower and head to ensure comfort and privacy. The bow owner's cabin is well lit, thanks to a skylight with an integrated hatch and offers numerous storage compartments. Exceptional design, pure comfort and ultimate convenience – the 380 FLY has it all.

Flybridge line

One of the classics, the hugely popular 380 FLY meets the all the criteria of a perfect flybridge yacht. With a roomy interior, several designs to choose from and an array of optional equipment it's easy to customize your dream boat.





— The flybridge is well equipped to accommodate guests



— Double seat at the top steering station



— Great handling and performance of the 380 FLY



380 FLY - Walnut

The saloon is located on the main deck and features a dinette and galley



— A galley, dinette and helm station can be found in the saloon



— Guest rest area on the main deck



— Separate head and shower down below

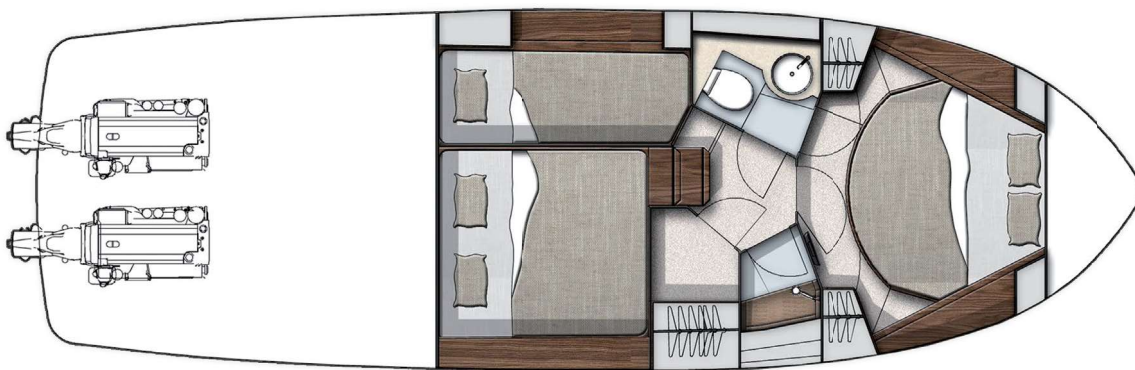


— Forward owner's cabin

380 FLY

AN ABUNDANCE OF LIGHT

LAYOUTS



TECHNICAL SPECIFICATION

Length of the hull	[m]	11.70
Length overall	[m]	11.99
Beam of the hull	[m]	3.66
Beam overall	[m]	3.74
Draft max ₁	[m]	0.81
Bridge clearance ₂	[m]	4.50
Height to transport	[m]	4.00
Fuel tank capacity	[dm ³]	2 x 500
Water tank capacity	[dm ³]	500
Grey water tank	[dm ³]	210
Black water tank	[dm ³]	135
Mass of Light Craft Condition ₃	[kg]	9700
Maximum Load	[kg]	2580
Min. engine (-s) power	[kW/HP]	2x165/225
Max. engine (-s) power	[kW/HP]	2x272/370
Crew limit		10
Category		B

₁ - without propellers ₂ - Max. height from water line at draft min. ₃ - minimum mass with base engines

**3RD GALEON
GENERATION**

CASTRO
YACHT DESIGN

**VOLVO
PENTA**



380 **FLY**





AN ABUNDANCE OF LIGHT

